

PORTFOLIO

PHOTOGRAPHY

Pause the motion, beauty lies in details.

Photography



The virgin rays mirrored by the circles of
water, rinsing the time beyond.



A new ray, a new hope. All in the
journey of endurance.

Photography



Innumerable shades of moments, embraced.
The day is on its pace.



Sometimes, time turns out to be the
distance.

Photography



The clock still ticks demanding ears to
listen.



The endless sequence will gradually
switch.

Photography



In the lap of universe, the other half of ours'
gulps all the sun, as we heal in the pool of
silver glow.



And the sundown merges the life forms
into its asymmetrical balance of
nature's harmony.

DESIGN PROJECT

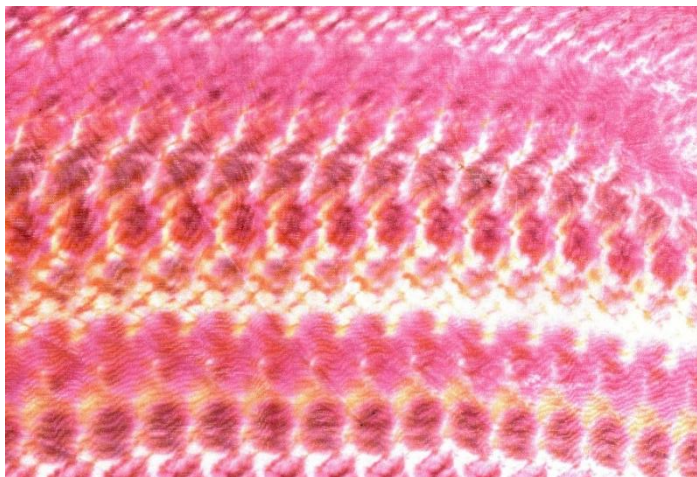
Maadharam - A crystalline progression.

Design project



Inspired from pomegranate, surfaces were manipulated. Later product prototypes were developed. The project duration was four weeks.
Photo credits: John Morgan, Samantha Forsberg & cooking fox

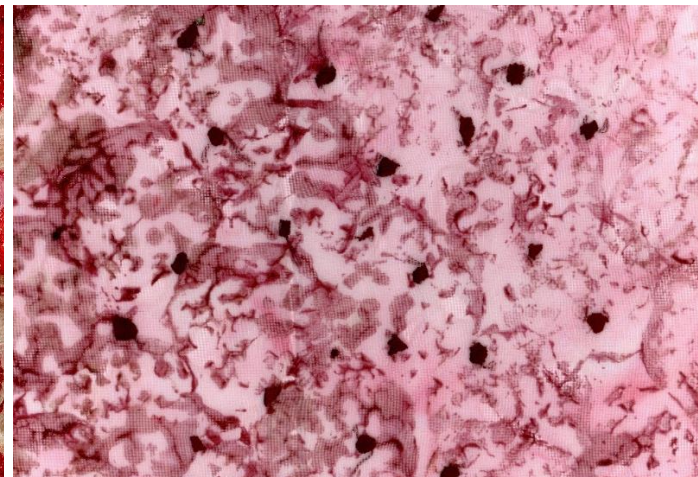
Design project



Tie and dyed silk fabric

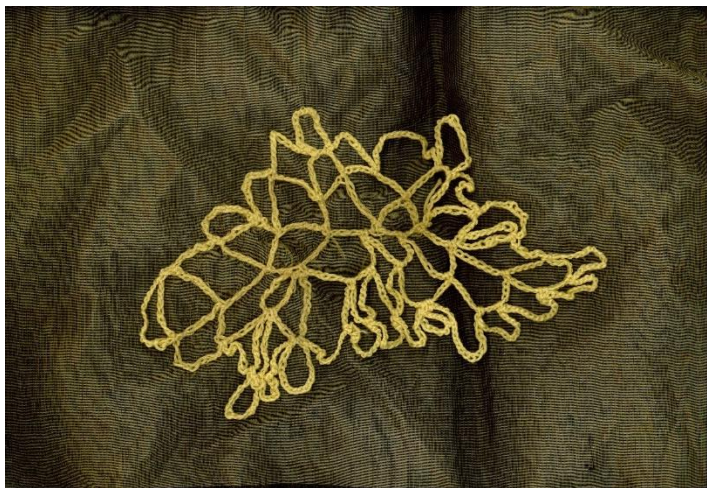


Appliqued and machine
embroidered organza on silk.



Pomegranate imprints on organdie,
with hand done embroidery.

Design project



Crocheted anchor threads
on organza fabric.



Chain and knotting
embroideries on muslin.



Composed tucks in dyed
organza.

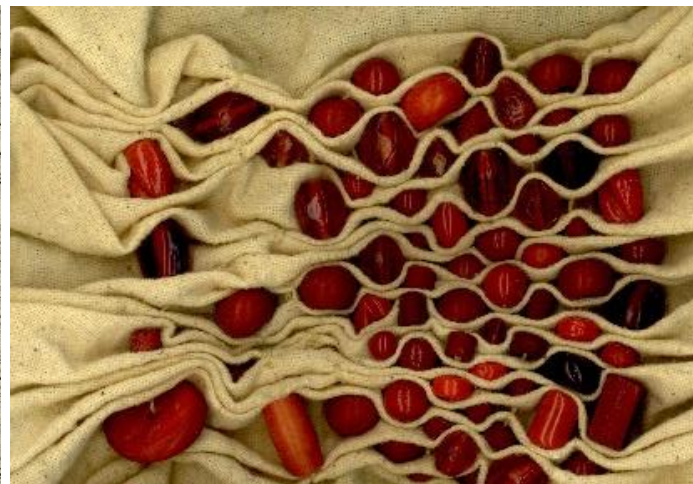
Design project



Heat set tie and dyed silk.



Woven fabric overlaid with
hand embroidered fabric.

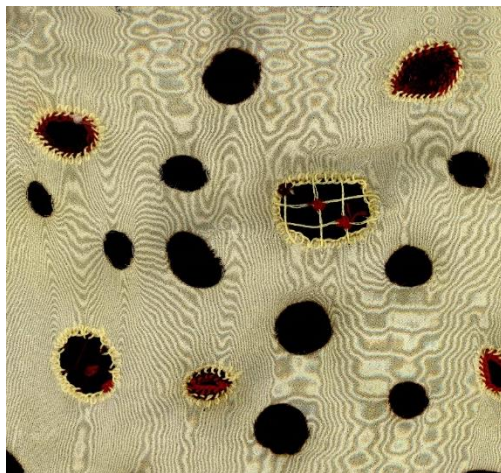


Honeycomb smocking with inlaid
crystals.

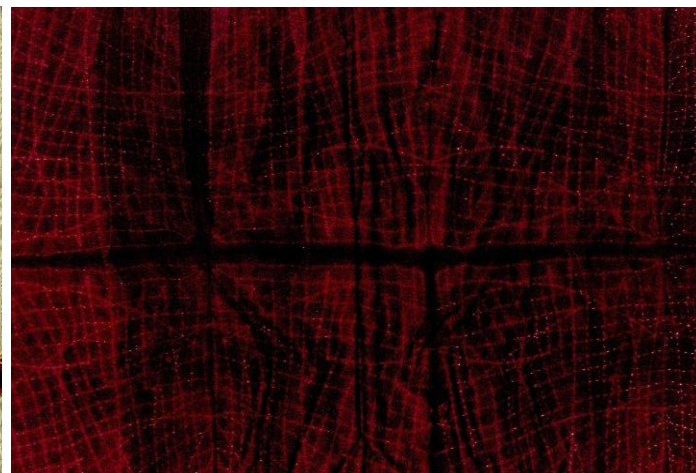
Design project



Button hole with pom pom .An adjustable fabric layering.



Burned perforations with embroidery finishes.



Machine stitched resist dye in silk fabric.

Design project



Vithu, is an openable cushion, which can hold basic objects of human need. The 12'' wide cushion is highly compactable and easily dryable.

Design project



The multipurpose product has surface, inspired from angular forms of the pomegranate seed.

Design project



Maathalam is a transformable pillow-mattress, inspired from the stacking fantasy of pomegranate seeds.
The customized product is developed for trekkers, assuring mobility and easy maintenance.

Design project



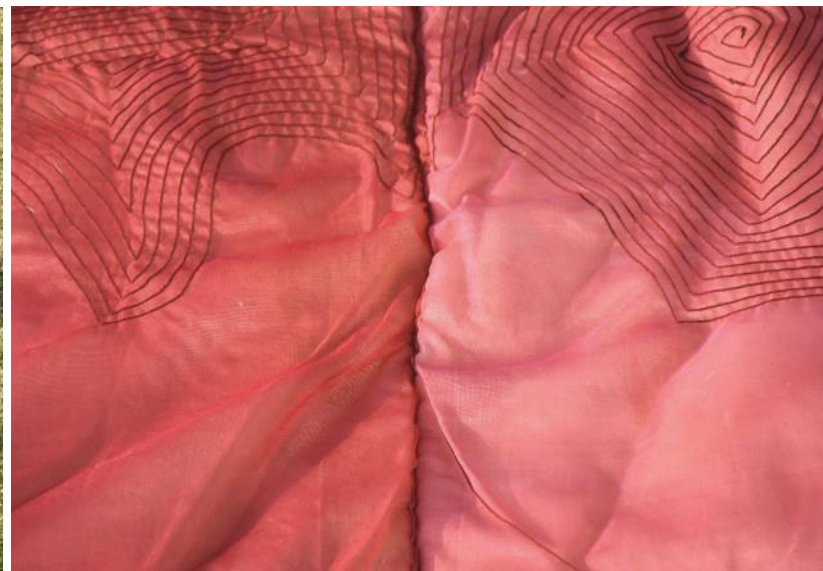
The flexible product offers its users with the opportunity to use it according to their comfort.

Design project



The three - fold product can be zipped to transform it in to a pillow.

Design project



The product tessellated with pomegranate in form, function and feel. Maadharam is a bridge between mattress and mat.

KNITTING & CROCHETING

A break through yarns.

Knitting / Crocheting



French knit with crocheted
embellishment.



Crocheted coaster sets.



French knitted pen gripper.

Knitting / Crocheting



Wrong side of front and back
knit. Hand knitted seamless
sample.



Moss stitch in recycled
woolen yarn.



Fusion of lace and pearl knit .

Knitting / Crocheting



Loom knitted, woolen neck warmer. Technique used -
Vikkel braid knit.

Knitting / Crocheting



Straight loom knitted, heavy
stole sample.



Three strands of 120s yarn
plied and loom knitted.

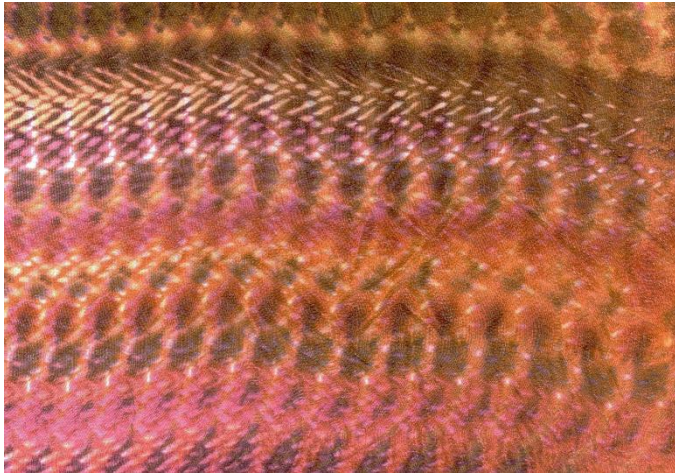


Crocheted neck piece.

DYEING

Evolution, cultures & colours.

Dyeing



Shibori(tie and dye) in its
best colours. Fabric-silk.

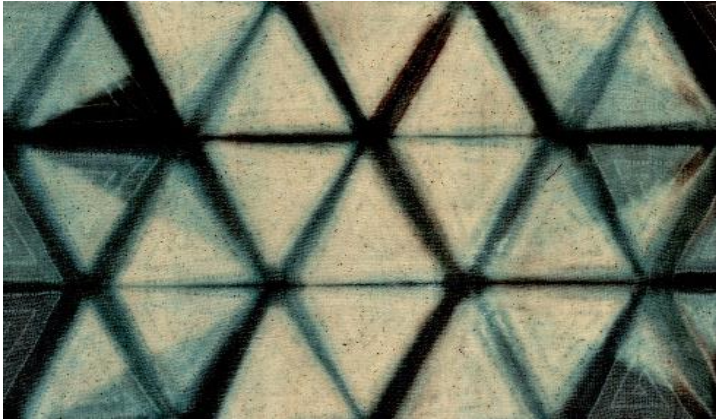


Developed resist dye technique
in natural dye for complex
customised designs.



A colour palette from Natural
dyes.

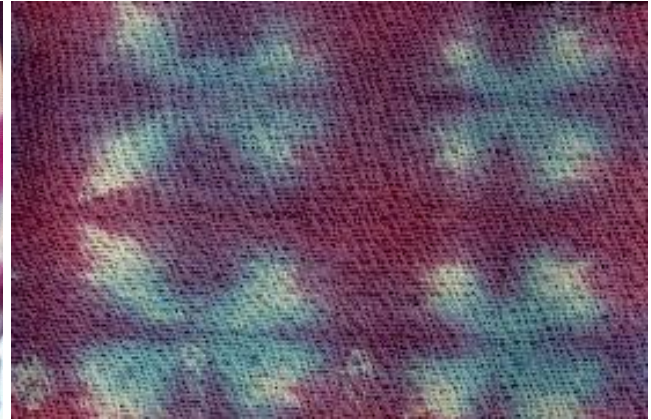
Dyeing



Clamp dyeing with machine
stitch resist detailing.



Moving away from traditional
dyeing techniques.



Organic shibori forms.

DESIGN PROJECT

Sustainable solutions.

Design project



Earth watch Institute(International organization) and NID collaborated in order to create surfaces and products out of weed(Water hyacinth). The project was of eight weeks and included-site visits, collection of material, surface & product developments, client interactions & workshops.

Design project



Paper strip braiding and
origami explorations.



Embellishments out of
waste.

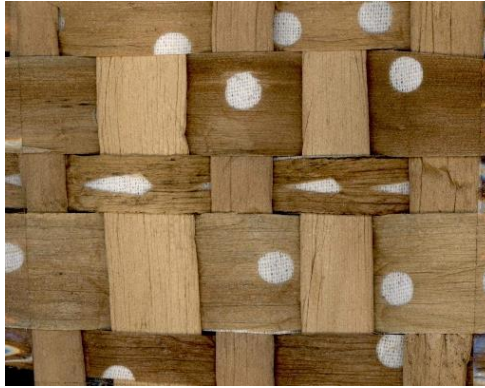


Embroideries and braiding on
mix medium.

Design project



Punched and inter knotted
with dyed jute.



Weed stems punched and
strengthened, later woven.



Water hyacinth pieced and applied
on cotton fabric.

Design project



Forms cut on water hyacinth surfaces, finished by machine embroidery.



The punched waste in-between the layers of organza.



Punched weed strips woven on loom.

Design project



Sliced weed skin, woven with zari and metal.



Patterns created while weaving on loom. Materials- cotton and water hyacinth



Kasavu(golden zari design), introduced on water hyacinth surfaces.

Design project



Machine embroidered water
hyacinth, later woven on loom.



Diaries developed out of weed
processing, embellished by
machine embroidery.



Dyed and plied weed stripes,
woven on cotton warp.

Design project



Woven table pouch for school teachers. The product aims to provide client, an easily
carriable and spreadable pouch.

Design project



The techniques involved plying weed with natural dyed cotton yarn, Weed skin, coloured in natural dyed was also used..

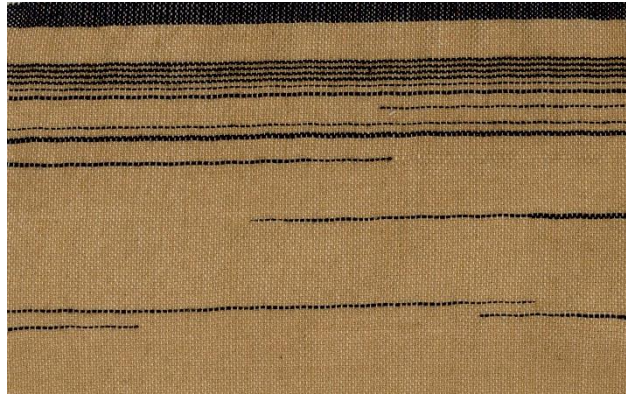
WEAVING

Tension at its best.

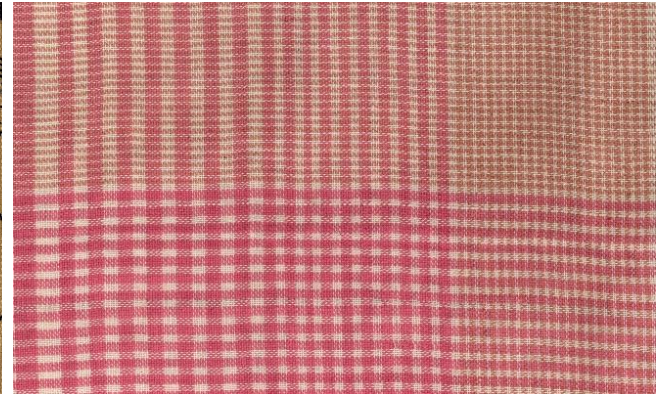
Weaving



Honeycomb in multi-coloured
warp.



Weft rib with striped
effect .



Colour and weave in
tricoloured warp and weft.

Weaving



Box drafting exploration with
loom stitched embroidery.

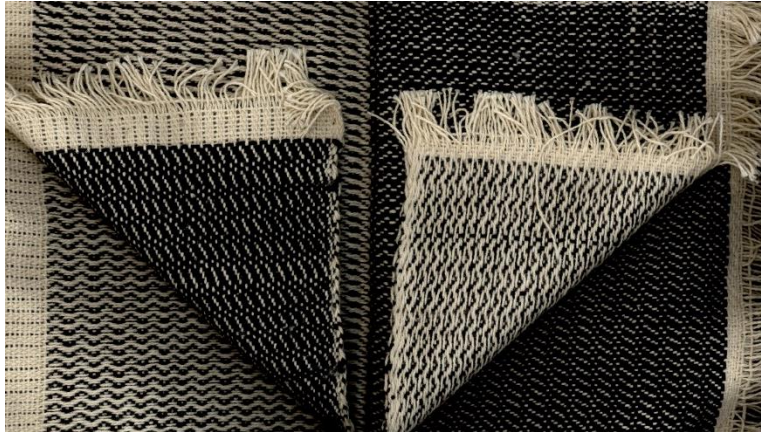


Warp rib in white warp along
with weft interlocking



Extra warp in box drafted
pattern.

Weaving



Pattern interchange, with one side stitched.



Four layered fabric made in eight shaft loom.



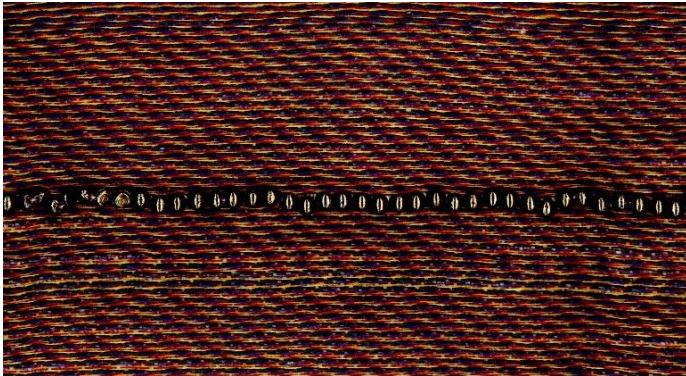
Tubular fabric in two coloured weft.

Weaving



Inspired from different aspects of bubbles a few samples were woven.
(photographs from google)

Weaving



Extracting the colour palette of bubbles, a loom woven beaded sample.



Inspired from bursting bubble, a tubular sample with woven embellishment was made.



Transparency of a bubble in lush greens, is a universal experience. Loom done layering of organza over basic weft.

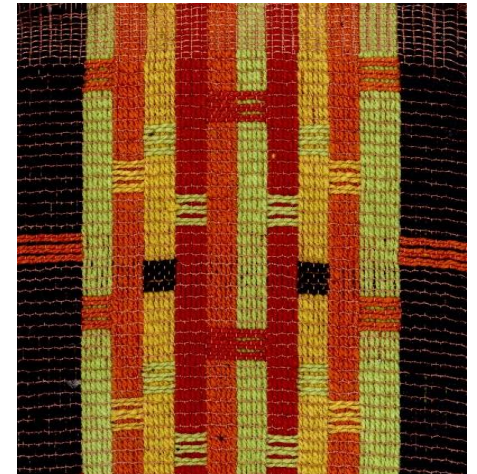
Weaving



Colour blocking, an abstraction
of bubble form and it's
symmetry.



Mirror embedded in cotton fabric,
inspired from the reflective
nature of inspiration.



Popping colours of flying
bubbles through special warp
and weft.

SURFACE DEVELOPEMENT

Documented aesthetics.

Surface development



ZOFFANY



Inspired from cartography (art of map making), a print for Zoffany (a home textile brand from Britain) was developed.

Surface development



Art works inspired from world map. Along with research came
sailors, compass, ships etc.

Surface development



Forms developed from compass, fused with cartography.

Surface development



Repeat size of the print is 60''long and 70''wide.

Thank you

Surandi Varma E